

# LS-5C

## With DRY EYE MODULE

### Comprehensive and professional dry eye examination and diagnostic program

**All-Round**

Support 7 dry eye detection functions  
Provide a reliable basis for clinical diagnosis

**AI**

Using AI algorithm to analyze images and recordings Like, high precision good repeatability

**Detailed**

The picture restores the real Report, clear and detailed Show the examination results

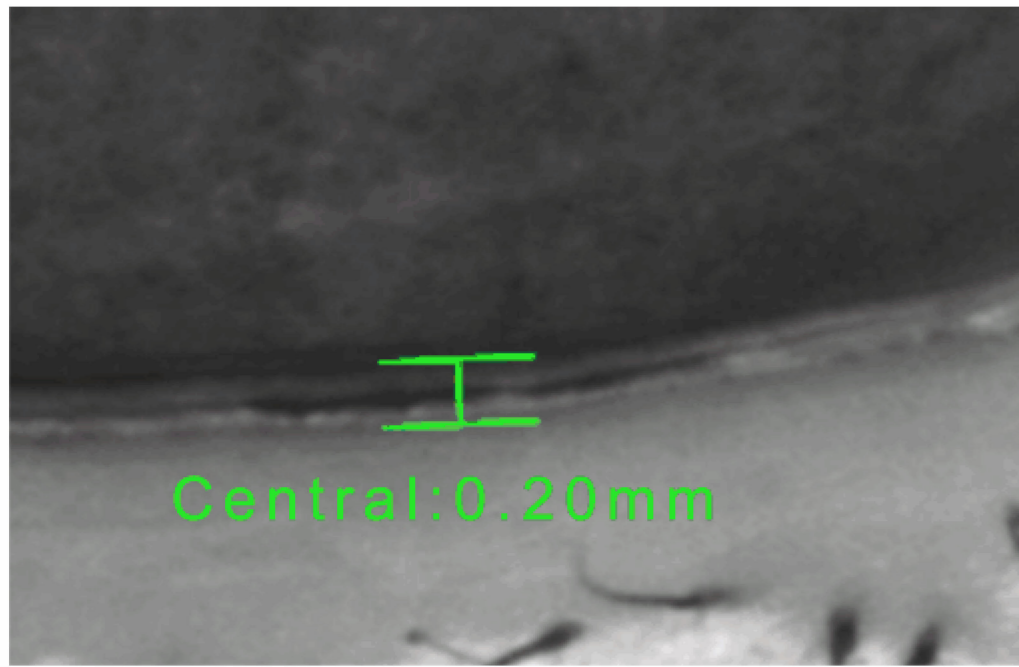
**Non-Invasive**

Non-Invasive inspection way  
Safer operation  
Patient comfort and easy cooperation

**8 Minutes**

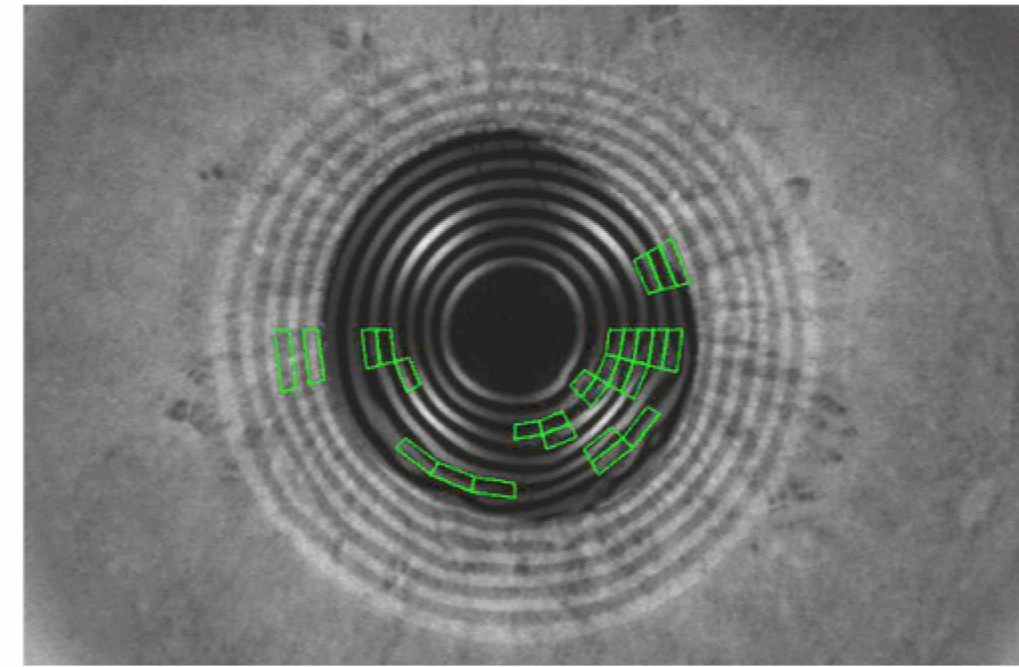
8 minutes can be quick Complete the full set of dry eye examination

# Professional dry eye test



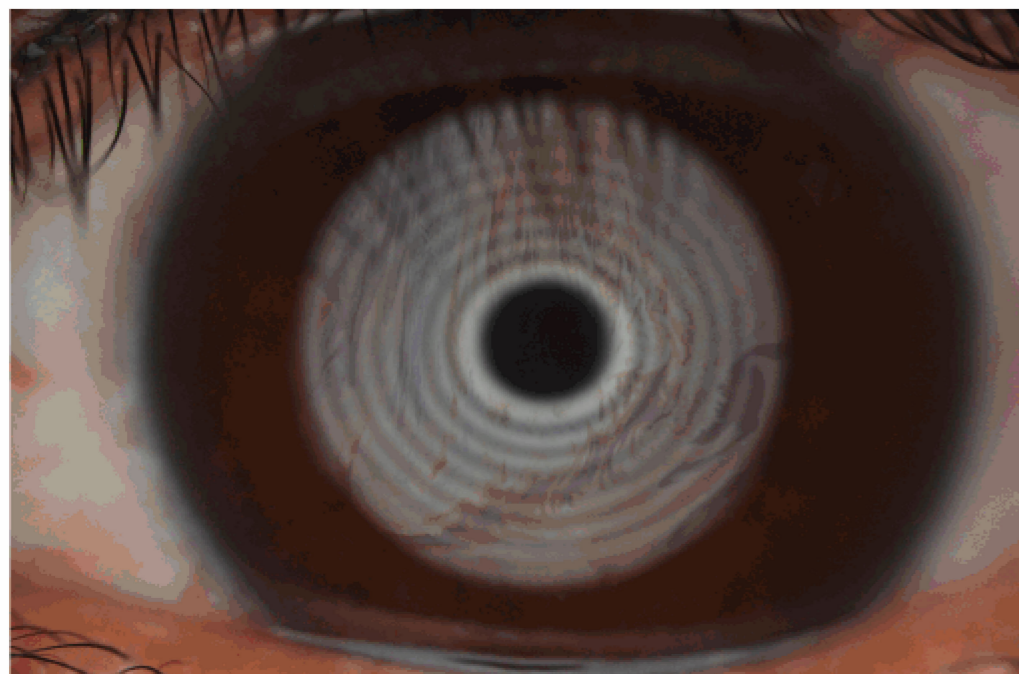
## TMH

Automated quantitative analysis of the AI  
Reliability is better  
Better Reliability



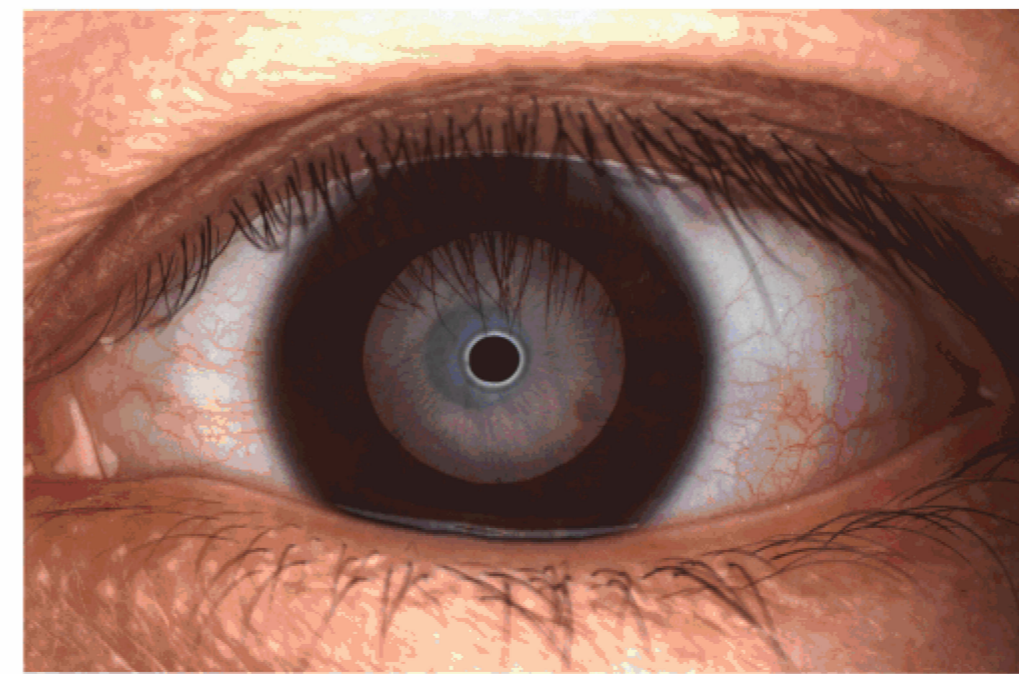
## NIBUT

Infrared HD image



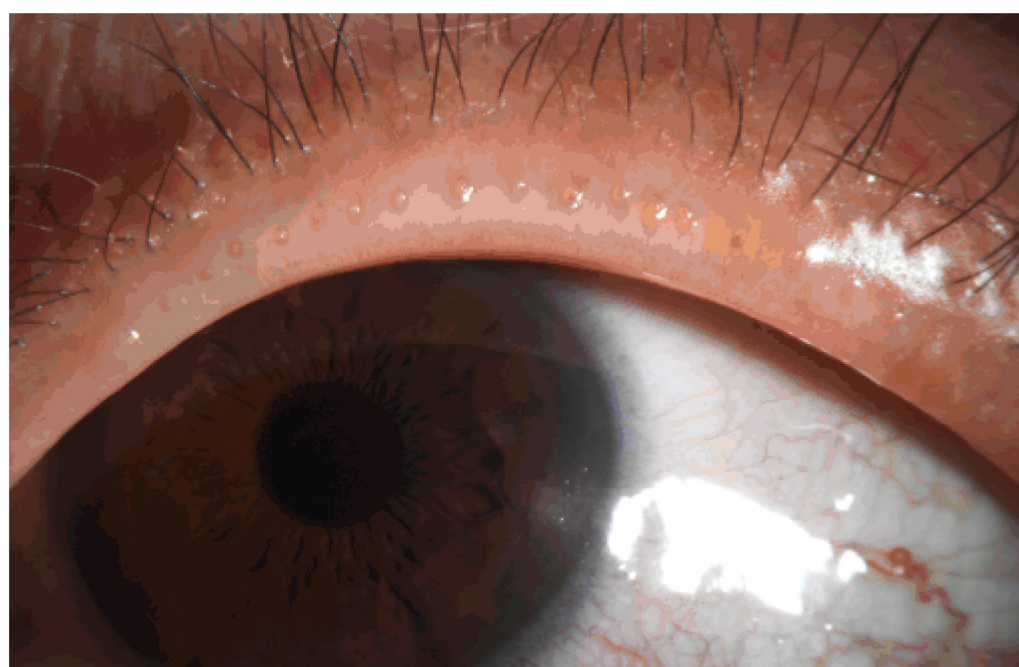
## Static / dynamic lipid layer

Image / video recording comparison



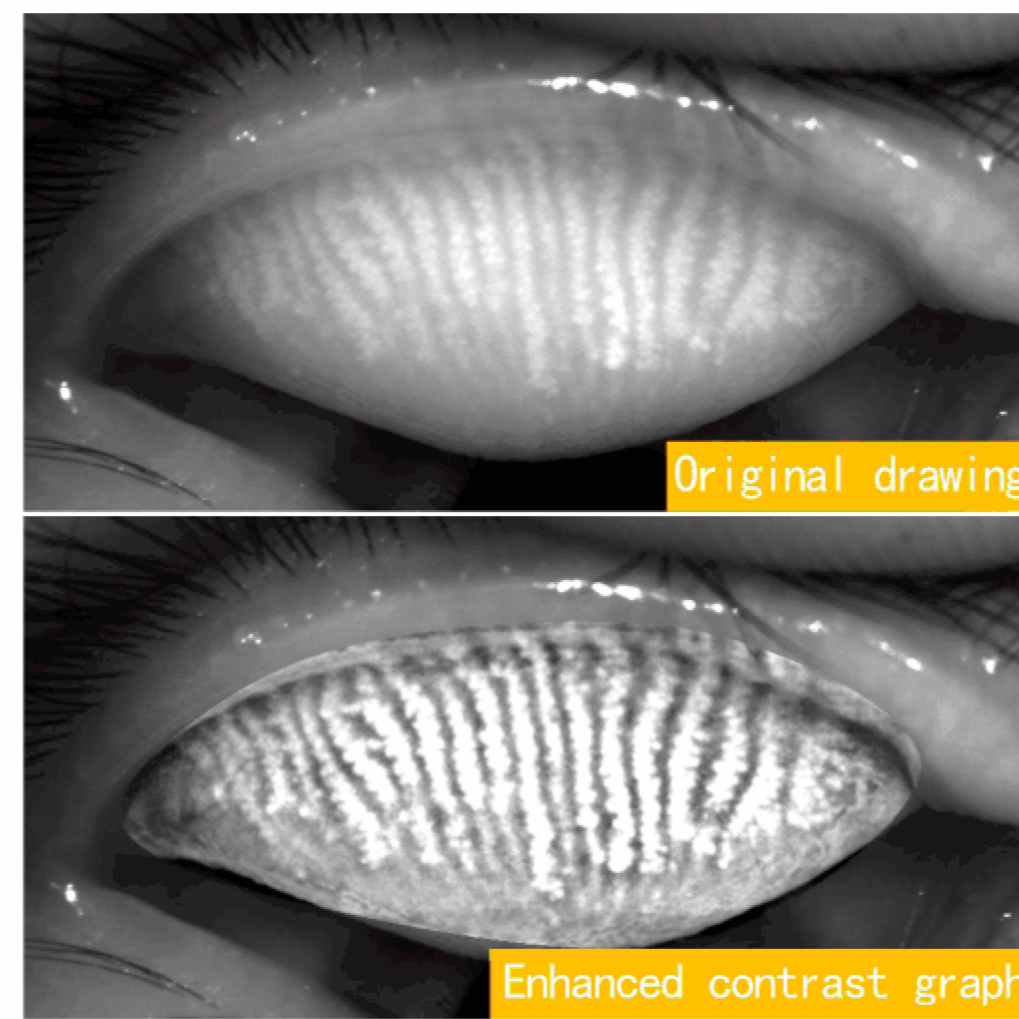
## Ocular Redness Analysis

Uniform HD image



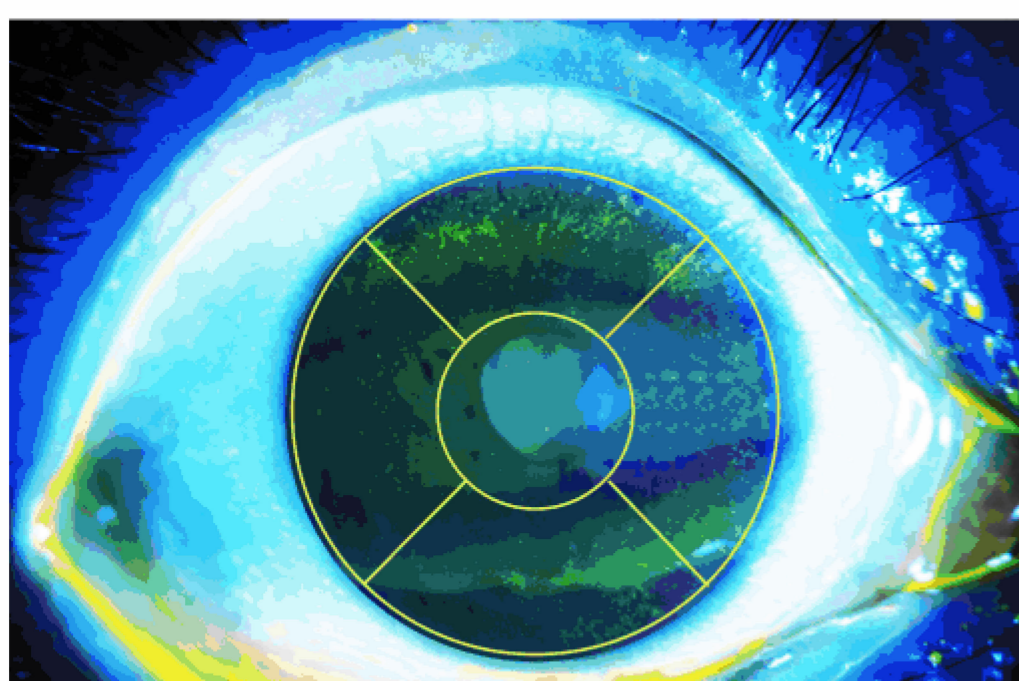
## Gland Opening

Uniform HD image



## Corneal Staining

The acinar morphology is  
Stereoscopic  
Excellent clarity of the glands



## Corneal Staining

Professional blue and yellow contrast filter

## Technical parameter

### Dry eye part

TMH	NIBUT	Static lipid layer analysis	Dynamic lipid layer analysis	Ocular Redness Analysis	Gland Opening	Meibomian glands	Corneal Staining	Eye position recognition	Questionnaire	Report
Auto/ Manual	Auto	Manual	Manual simple video comparison	Auto/ Manual	Manual	Manual	Manual	Auto	3 types	Comprehensive/ single item

### Slit Lamp part

Optical effect	Collector	Spot Size	Color filter	Light source	Background Light
Excellent optical effect	Built-in professional level medical collector has 20 million pixels	φ0.2, φ1, φ3, φ5, φ10, φ14	Heat absorbing, Grey filter, Red-free filter, Cobalt blue filter	warm LED	Coaxial background light



[www.shtopview.com](http://www.shtopview.com)  
上海拓扑威实业有限公司  
Shanghai Top View Industrial Co.,Ltd